

# **The Lake Lothing (Lowestoft) Third Crossing Order 201[\*]**

---



Lake Lothing  
**THIRD  
CROSSING**

---

## **Document SCC/LLTC/EX/156: Environmental Statement Volume 2 Figures 4.1 and 4.3**

---

**Planning Act 2008**

**The Infrastructure Planning (Applications: Prescribed Forms and Procedure)  
Regulations 2009**

**The Infrastructure Planning (Examination Procedure) Rule 2010**

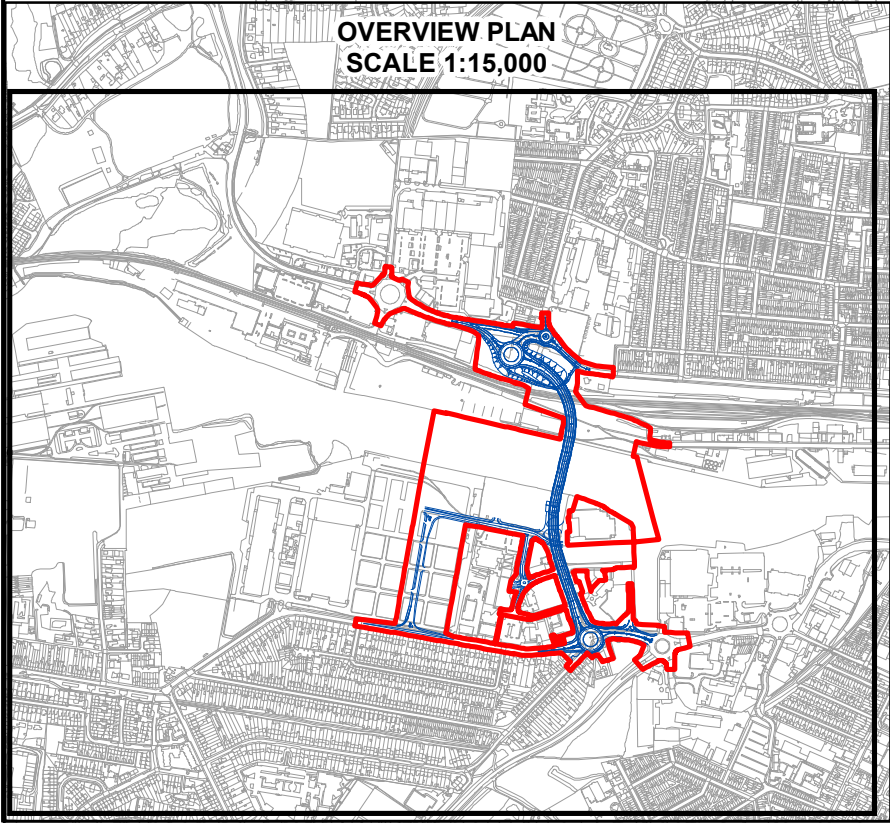
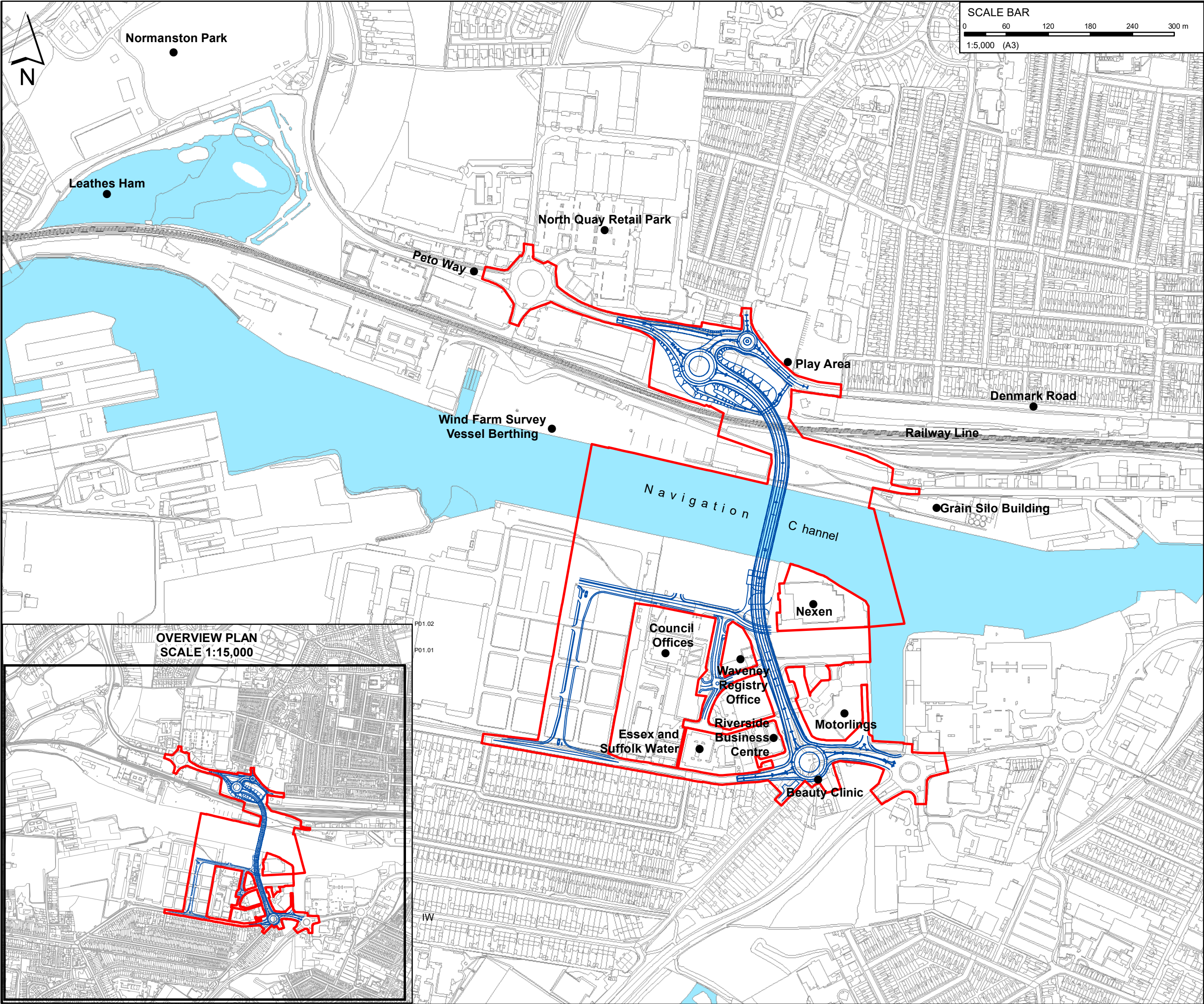
PINS Reference Number: TR010023

Author: Suffolk County Council

Document Reference: SCC/LLTC/EX/156

Date: May 2019

*This page is intentionally left blank*




**KEY**

- Order Limits
- The Scheme (illustrative)
- Adjacent Landuse Location
- East Suffolk Railway Line


Mapping reproduced by permission of Ordnance Survey on behalf of HMSO.  
© Crown copyright and database rights 2017. All rights reserved.  
Ordnance Survey licence number 100023395  
Contains OS data © Crown copyright and database rights 2017.

P01	DH	HR	JB	11/04/2019
ORDER LIMITS REVISED & DESIGN AMMENDMENTS				
P00	IW	HR	MD	11/05/2018
ORDER LIMITS REVISED & MINOR AMENDMENTS				
REVISION	DRAWN	CHECKED	APPROVED	DATE
DESCRIPTION				



**Suffolk**  
County Council

PROJECT TITLE



DRAWING TITLE

Adjacent Land Uses  
Figure 4.1

DRAWING STATUS

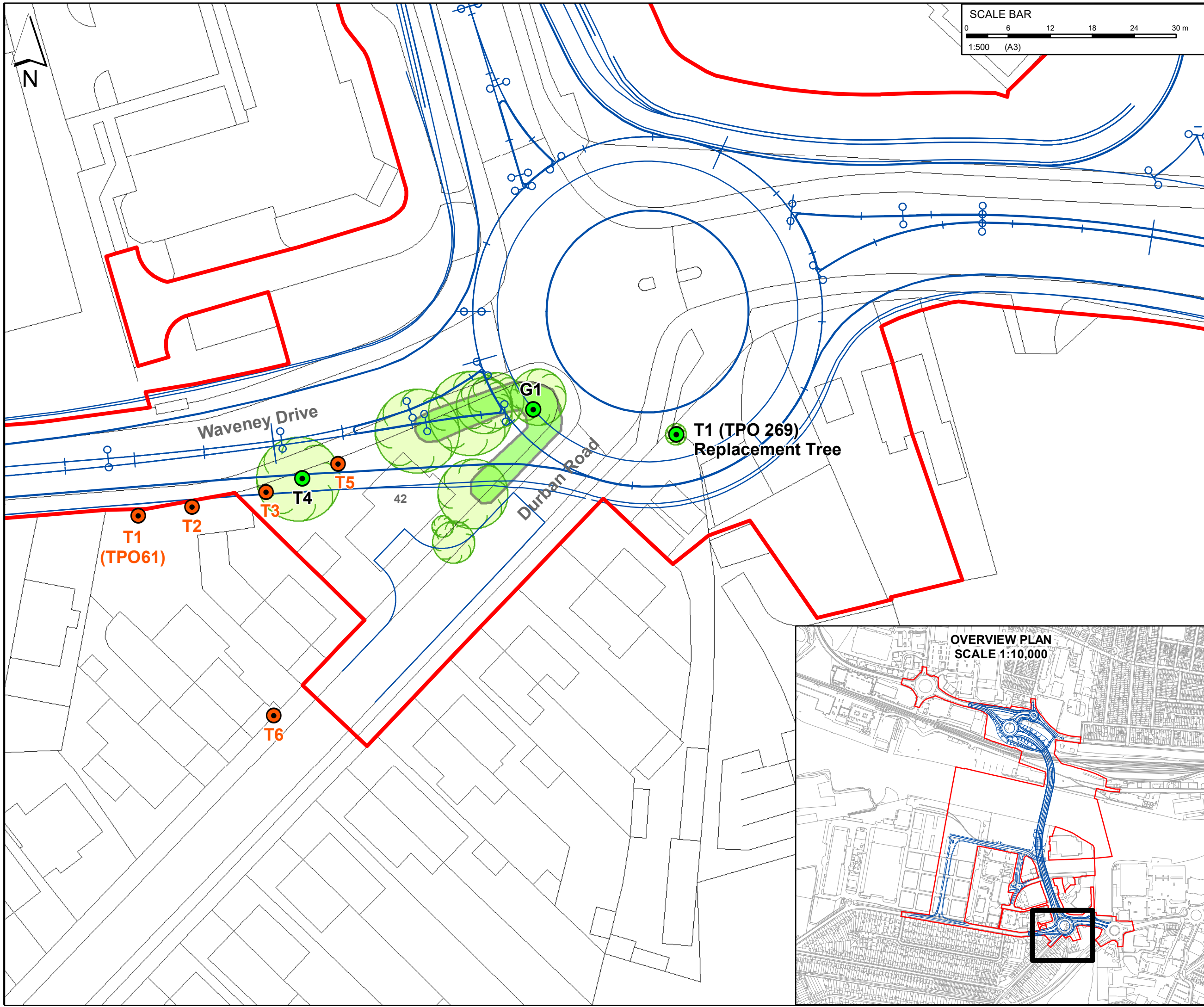
For DCO Examination

DRAWN	CHECKED	APPROVED	AUTHORISED	SUITABILITY
DH	HR	HR	JB	S4

SCALE @ A3 SIZE	DATE	REVISION
1:5,000	11/04/2019	P01

DRAWING NUMBER

Project	Originator	Volume	
1069948-WSP-EGN-LL_C19-SK-LE-0011			
Location	Type	Role	Number



**KEY**

- Order Limits
- The Scheme (illustrative)
- Surveyed Trees

**Tree Preservation Orders (TPO)**

- TPO Trees Present
- TPO Trees No Longer Present

TPO Reference	Tree Species
T1 (TPO61)	Elm
T2	Elm
T3	Elm
T4	Sycamore
T5	Elm
G1	4 Scamore and 2 Elms
T6	Elm
T1 (TPO 269)	Sycamore

Mapping reproduced by permission of Ordnance Survey on behalf of HMSO.  
 © Crown copyright and database rights 2017. All rights reserved.  
 Ordnance Survey licence number 100023395  
 Contains OS data © Crown copyright and database rights 2017.

P01	DH	HH	JB	26/04/2019
ORDER LIMITS REVISED & DESIGN AMMENDMENTS				
P00	IW	HR	MD	11/05/2018
ORDER LIMITS REVISED & MINOR AMENDMENTS				
REVISION	DRAWN	CHECKED	APPROVED	DATE
DESCRIPTION				
<p><b>PROJECT TITLE</b></p>				
<p><b>DRAWING TITLE</b></p> <p>Tree Preservation Orders Figure 4.3</p>				
<p><b>DRAWING STATUS</b></p> <p>For DCO Examination</p>				
DRAWN	CHECKED	APPROVED	AUTHORISED	SUITABILITY
DH	HR	HR	JB	S3
SCALE @ A3 SIZE		DATE	REVISION	
1:500		26/04/2019	P01	
<p><b>DRAWING NUMBER</b></p> <p>Project   Originator   Volume</p> <p>1069948-WSP-EGN-LL-C19-SK-LE-0019</p> <p>Location   Type   Role   Number</p>				

